



# AN1093 - Integrating Net2 with Dedicated Micros software

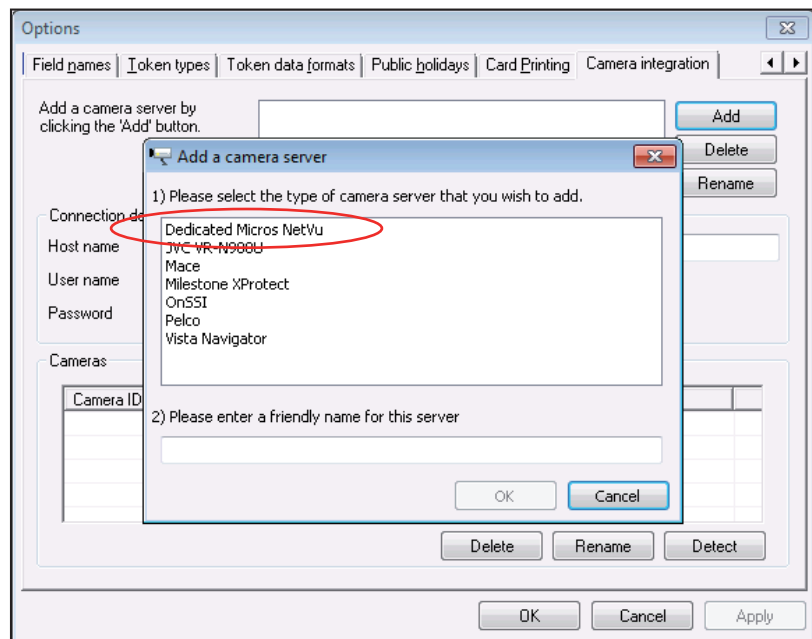
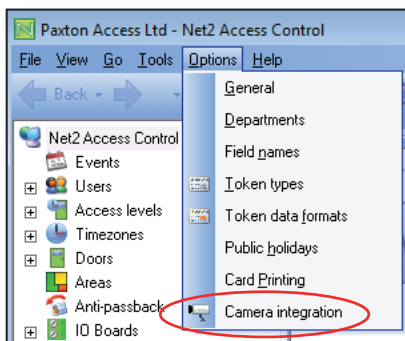
## Overview

Net2 allows the integration of the camera software which will provide digital images associated with a Net2 event. This means that when security operators want to see what has caused an alarm or access event, they simply double-click on an event and view the video images.

## Camera Server selection

The camera software must be installed, configured and running on the camera server before you can configure the option on Net2.

Once that has been done, go into the Options menu on Net2 and select 'Camera integration'. Click on the Add button and select the required server from the list. Add a server name and register the server by clicking OK.



Net2 software before v4.13 requires the Dedicated Micros feature to be enabled before the configuration screen can be viewed.

Run the Net2 Server Configuration Utility, click on the Features tab and select the Dedicated Micros option.

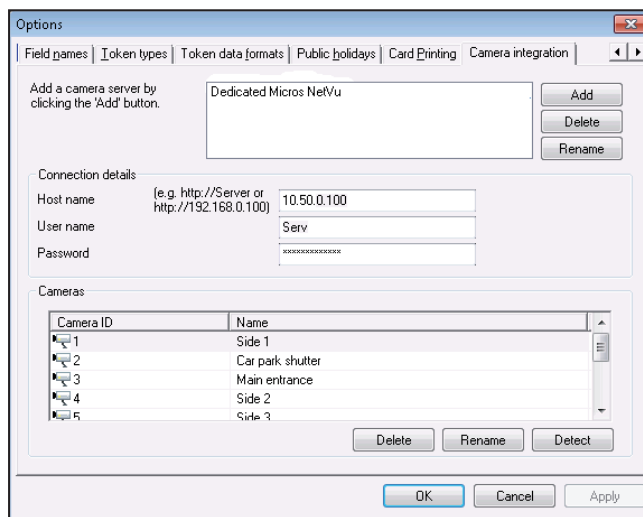
You must now restart the Net2 Server. Right click on the server icon and select Close. When you restart the Net2 application the Options menu will then contain a Dedicated Micros tab. Click on this tab. (Shown as the Camera integration Tab in later diagrams within this document)

## Software configuration

Here we see the parameters screen for the camera server. These settings only need to be configured on the Net2 server; all Workstations will access this information through the server.

Enter the Host name of the machine that camera software is installed on, (http://Camerasvr or IP address / port) and then the user name and password.

Click the Detect button and Net2 will automatically add all the active cameras. The cameras can be renamed if required. Click OK to finish.

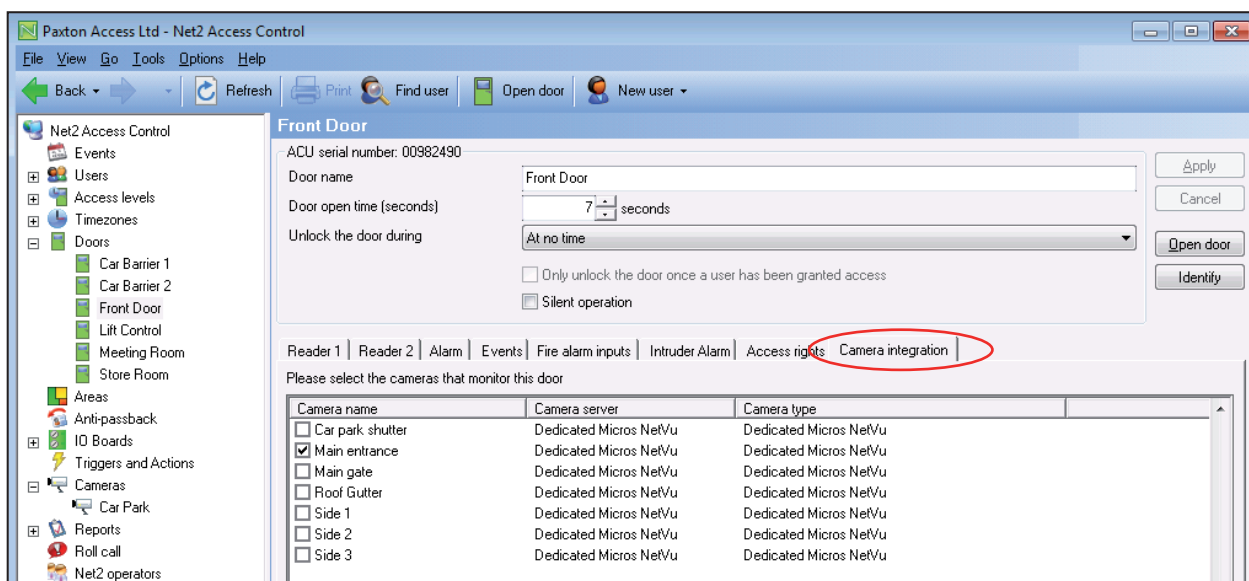


## Doors

Any door that is to be associated with a camera now needs to be configured.

Click on the Door in the tree view and select the Camera Integration tab.

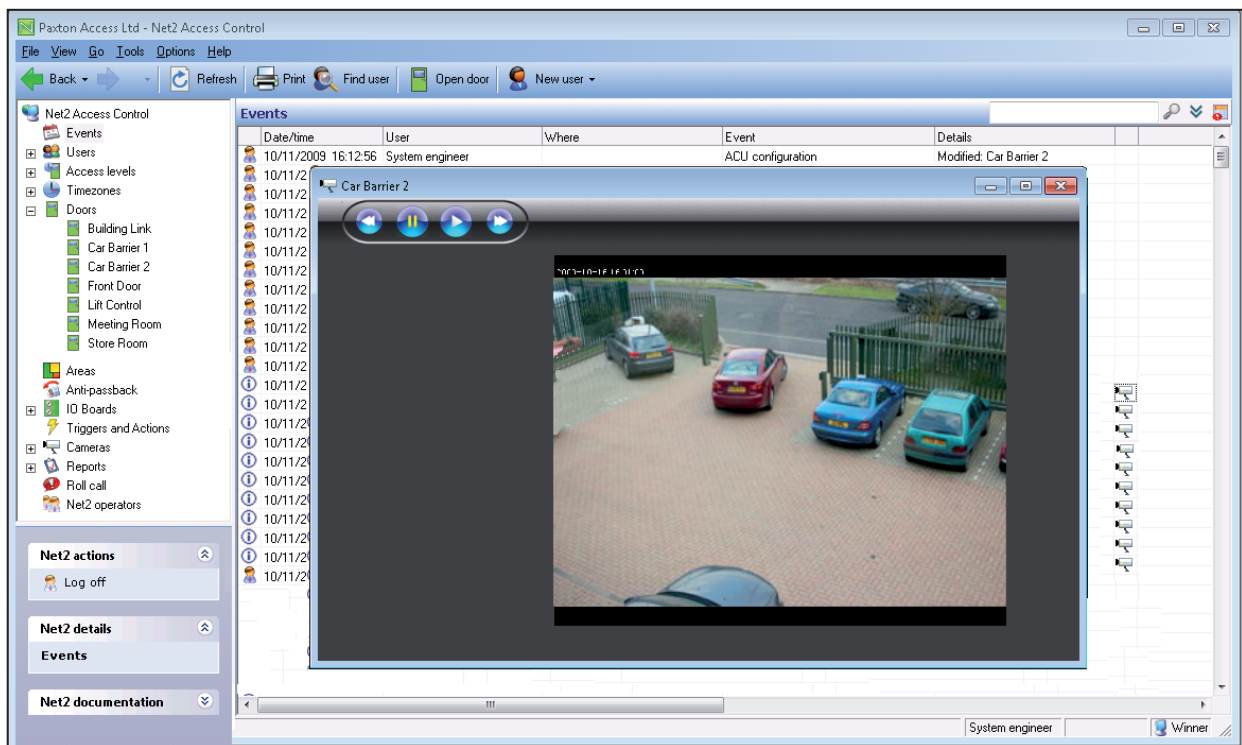
Place a tick against the camera to be associated with this door and Apply. Multiple cameras can be selected from the list.



## Events

Doors that have been associated with a camera show an additional icon beside the event.

Double-clicking the icon displays the stored video images showing the event taking place.



No additional software is required on Net2 PC as the application logs directly into the DVR system. The Dedicated Micros software is called NetVu Observer. The images are stored on the DVR system.

Further information about these products can be found at:  
<http://www.dedicatedmicros.com/europe/netvu.php>

### NetVu Connected Devices

The following is a list of current NetVu connected products available:

DVIP Server	DVIP Decoder
DVIP ATM	DVIP Encoder
DS Server	
New DS2	SD Range
NetVu Connected DS2	NetVu Connected BX2
NetVu Console	MegaPixel Camera
2060 IP Dome	NetVu Connected Eco16
NetVu connected Eco9	TransVu