

VISTA VNPRCE NUMBER PLATE RECOGNITION CAMERAS



SMART, RELIABLE NUMBER PLATE RECOGNITION SYSTEM

Vista's attractive new range of VNPRCe cameras has been designed to accurately and reliably capture number plates for a wide variety of applications.

The cameras, which can be used as stand alone units or in conjunction with Vista's VNPR software, have an impressive 98% image capture rate for legal retro-reflective plates. The use of IR LED illumination means that there is no need for regular bulb changes. It also ensures that reliable images can be collected day and night, no matter what the lighting conditions.

The cameras have been cleverly re-designed to make installation as simple and quick as possible. Each unit comes completely pre-configured so that there are no complicated installation settings, other than ensuring that the camera is pointing in the right direction. They are also hugely reliable and will provide your customer with year upon year of hassle-free operation.

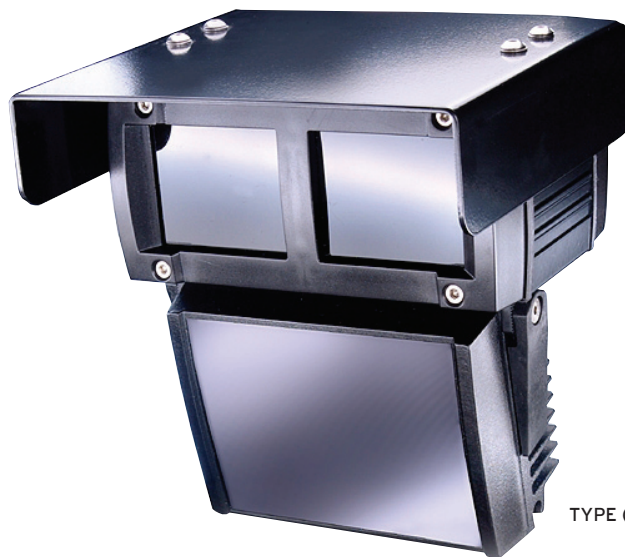
The range comes in a variety of options with a common look across all the models. The new design is both aesthetically pleasing and suitable for a wide range of applications, including automated car parks, petrol filling stations, airports, hotels and many more.

All models come supplied with a wall mount bracket, additional brackets are available.

To learn more about this product range please visit us at vista-cctv.com



TYPE (A)



TYPE (B)

Key Features:

Excellent performance

Camera and LED shuttering matched to provide 98% capture reliability for legal retro-reflective number plates

Reliability

Years of problem-free operation allows the operator to fit and forget

Complete range

Comprehensive range caters for vast majority of circumstances

Aesthetic design

Modern, sleek design makes them suitable for wide variety of applications

Day/night overview camera

Guaranteed excellent picture quality, whatever the lighting conditions

Factory preset

Units come pre-configured for quick and easy installation

THE PROFESSIONAL CHOICE

MODELS IN THIS RANGE

VNPRC6e	Type A	6m number plate camera, includes wall mount bracket
VNPRC12e	Type A	12m number plate camera, includes wall mount bracket
VNPRC18e	Type A	18m number plate camera, includes wall mount bracket
VNPRC25e	Type B	25m number plate camera, includes wall mount bracket
VNPRC35e	Type B	35m number plate camera , includes wall mount bracket
VNPRCD12e	Type B	12m number plate camera, with day/night overview, includes wall mount bracket
VNPRCD18e	Type B	18m number plate camera, with day/night overview, includes wall mount bracket
VNPRCD25e	Type B	25m number plate camera, with day/night overview, includes wall mount bracket
VNPRCD35e	Type B	35m number plate camera, with day/night overview , includes wall mount bracket

VNPRCPSUe PSU for VNPRCe range

TECHNICAL SPECIFICATION

CAMERA RANGES AVAILABLE

6m, 12m, 18m, 25m and 35m

NUMBER PLATE CAMERA SPEC

Sensor	Monochrome 1/3" CCD
Resolution	570TVL
Sensitivity	0.005Lux @ F1.2 3200K
Sensitivity	>48db
Video output	1Vp-p (75Ω)

OVERVIEW CAMERA SPEC

Sensor	DAY/NIGHT 1/3" CCD
Resolution	480/570TVL
Sensitivity	0.005LUX @ F1.2 3200K
Sensitivity	1VP-P (75Ω)

ILLUMINATION

LED type	Surface mount LED
Wavelength	850nm
Operation	Pulsed at 1000Hz to match shutter speed of camera

ELECTRICAL

Voltage	12V DC max +/- 10%
PSU	100-240V AC PSU (old separately)
Power	Max 2.5 Amps
MTBF	>150,000 hours

DIMENSIONS

Type (A)	Max L (260mm) x W (155mm) x H (190mm)
Type (B)	Max L (320mm) x W (175mm) x H (190mm)

GENERAL

Operating temperature	-150C to +550C
Operating humidity	20% to 90% RH
Storage temperature	-300C to +800C
Storage humidity	Up to 98% RH

RELATED PRODUCTS

VNPRCPAe	Side pole mounting plate
VNPRCCMe	Ceiling mount bracket
VNPRCTMe	Tower Mount Bracket



No liability will be accepted by Vista for any errors or omissions in this information.

DS-VNPRCe-version1